

CSHERUN®



WELCOME YOUR CUSTOMIZED OR OEM.



China Head Office

CHANGSHU HERUN IMPORT & EXPORT CO.,LTD

Hetai Village,Xinzhuang Town,Changshu

Jiangsu Province,215555,P.R.China

Tel : +86 (0) -512-65726409

Mobile : +86 (0) -15862371555

E-mail : sales@csherun.com

Http : //www.csherun.com

Thailand Distributor

AS SOLUTION TECHNOLOGY CO., LTD

38/28 M.6 T.Banchang,A.Banchang, Rayong

21130Thailand.

Tel : +66(0)98-593-8789

E-mail: sanya.s@assolutech.com

Https : //www.assolutech.com

VietNam Branch Company

XIAMEN BIEN HOA IMPORT EXPORT CO.,LTD

No. 3/29, Vu Hong Pho Street, Quarter 2. Binh

Da Ward, Bien Hoa ,Dong Nai Province,VietNam.

Tel : + 0765491166

E-mail: sales@csherun.com

www.csherun.com

CHANGSHU HERUN IMPORT & EXPORT CO.,LTD

CHINA • CHANGSHU



COMPANY INTRODUCTION

As a globally operating enterprise, the field of pressure and temperature measurement is an important component of the company's business. With numerous high-quality employees, the company has also developed its own standards in liquid level and flow measurement, calibration technology, and SF6 gas solutions.

CSHERUN was established in 2009. With high-quality employees, high-precision instruments, and comprehensive services, its products can now meet the requirements of most industrial measurement technologies.

Every year, over 10 million high-quality products are delivered and used in batches ranging from 1 to over 10000. We will become your reliable partner with excellent technology and high-quality service.

DIRECTORY

02 PRESSURE MEASURING

16 PRESSURE SENSORS

19 ELECTRONIC PRESSURE SWITCH

22 FLOW METER
SF6 GAS SOLUTIONS

24 VALVES AND MOUNTING
ACCESSORIES

13 DIAPHRAGM SEALS

17 PRESSURE TRANSMITTER

21 TEMPERATURE

23 CALIBRATION

26 Pressure gauge movement

BOURDON TUBE PRESSURE GAUGE

Mini Pressure Gauge Copper alloy



Model:	PB25.050(Back connection)
Application:	For gaseous and liquid media
Nominal size(mm):	14.5, 25
Scale ranges:	0 ... 0.6 to 0 ... 400bar
Accuracy class:	2.5
Material of wetted parts:	Copper alloy

Copper alloy, plastic case Standard Version



Model:	PB02.050(Back connection) PB02.010(Bottom connection)
Application:	For gaseous and liquid media
Nominal size(mm):	40 [1 1/2"], 50 [2"], 63 [2 1/2"], 80 [3"], 100 [4"] and 160 [6"]
Scale ranges:	0 ... 0.6 to 0 ... 400bar
Accuracy class:	1.0, 1.6, 2.5
Material of wetted parts:	Copper alloy

Fire Extinguishere Gauge Stainless steel case, Copper alloy



Model:	Fe01
Application:	For gaseous and liquid media
Nominal size(mm):	35
Scale ranges:	0 ... 400bar
Accuracy class:	4.0
Material of wetted parts:	Copper alloy

Welding Gauge Copper alloy, steel case



Model:	TW02.050(Back connection) TW02.010(Bottom connection)
Application:	For welding, cutting and allied processes
Nominal size(mm):	40 , 50 , 63
Scale ranges:	0 ... 0.6 to 0 ... 400bar Measurement of oxygen, acetylene, and other gases
Accuracy class:	2.5
Material of wetted parts:	Copper alloy

BOURDON TUBE PRESSURE GAUGE



Steel case, Copper alloy
Industrial Version

Model:	TS01.050(Back connection)
	TS01.010(Bottom connection)
Application:	For gaseous and liquid media
Nominal size(mm):	40 , 50 , 63, 80, 100,160
Scale ranges:	0 ... 0.6 to 0 ... 400bar
Accuracy class:	1.0, 1.6, 2.5
Material of wetted parts:	Copper alloy



Pressure thermometer
Plastic/steel case, Copper alloy

Model:	TP01.050(plastic case)
	TP02.050(steel case)
Application:	For pressure and temperature measurement
Nominal size(mm):	40, 50, 63, 80
Scale ranges:	0 ... 16 bar, 0 ... 150°C
Accuracy class:	Pressure 2.5 (EN837-1) Temperature ±2.5 °C
Material of wetted parts:	Copper alloy



Refrigerant gauge
Stainless steel case,
Copper alloy or stainless steel

Model:	BR01.072
Application:	For refrigeration engineering to simultaneously measure the pressure and temperature of steam.
Nominal size(mm):	63, 80
Scale ranges:	0 ... 40bar
Accuracy class:	1.6
Material of wetted parts:	Copper alloy



Copper alloy case,
liquid filling

Model:	B202.070(Back connection)
	B202.030(Bottom connection)
Application:	Used for measuring places with dynamic loads and vibrations
Nominal size(mm):	63, 100
Scale ranges:	0 ... 0.6 to 0 ... 1000bar
Accuracy class:	1.0, 1.6(NS:63mm)
Material of wetted parts:	Copper alloy

BOURDON TUBE PRESSURE GAUGE



Stainless steel case,
Copper alloy, liquid filling

Model:	BC01.070(Back connection)
	BC01.030(Bottom connection)
Application:	Used for measuring places with dynamic loads and vibrations
Nominal size(mm):	40, 50, 63, 100
Scale ranges:	0 ... 0.6 to 0 ... 600bar
Accuracy class:	1.0/1.6/2.5
Material of wetted parts:	Copper alloy



Stainless steel
compact version

Model:	SP02.010
Application:	For gaseous and liquid aggressive media, also in aggressive environments
Nominal size(mm):	40, 50, 63
Scale ranges:	0 ... 1.0 to 0 ... 600bar
Accuracy class:	1.6, 2.5
Material of wetted parts:	Stainless steel



Stainless steel case, Copper alloy
Industrial version

Model:	BW03.050(Back connection)
	BW03.010(Bottom connection)
Application:	For gaseous and liquid media
Nominal size(mm):	100, 160
Scale ranges:	0 ... 0.6 to 0 ... 600bar
Accuracy class:	1.0
Material of wetted parts:	Copper alloy



Stainless steel
standard version

Model:	SW06.010 (Bottom connection)
	SW06.030 (Liquid filling)
	SW06.050 (Back connection)
	SW06.070 (Liquid filling)
Application:	For gaseous and liquid aggressive media, also in aggressive environments
Nominal size(mm):	63, 100,160
Scale ranges:	0...0.6 to 0.....600bar
Accuracy class:	0.5/1.0/1.6
Material of wetted parts:	Stainless steel/Monel/Hastelloy C

BOURDON TUBE PRESSURE GAUGE



**Precess pressure gauge,
Safety version Phenolic case,
Stainless steel/monel/Hastelloy C**

Model:	S.SP01.010
	S.SP01.030(Liquid filling)
Application:	For gaseous and liquid aggressive media, also in aggressive environments
Nominal size(mm):	115, 160
Scale ranges:	0 ... 0.6 to 0 ... 1000bar
Accuracy class:	0.5, 1.0
Material of wetted parts:	Stainless steel/monel/Hastelloy C



**Solid front, Safety version
Stainless steel/Monel/Hastelloy C**

Model:	SA03.010 (Bottom connection) SA03.030 (Liquid filling) SA03.050 (Back connection) SA03.070 (Liquid filling)
Application:	For gaseous and liquid aggressive media, also in aggressive environments
Nominal size(mm):	63, 100, 160
Scale ranges:	0...0.6 to 0.....600bar
Accuracy class:	0.5/1.0/1.6
Material of wetted parts:	Stainless steel/Monel/Hastelloy C

**Monel pressure gauge
standard version**



Model:	SM03.010 (Bottom connection) SM03.030 (Liquid filling) SM03.050 (Back connection) SM03.070 (Liquid filling)
Application:	For gaseous and liquid aggressive media, also in aggressive environments
Nominal size(mm):	63, 100, 160
Scale ranges:	0 ... 0.6 to 0 ... 1600bar
Accuracy class:	1.0
Material of wetted parts:	Monel



**Pressure Gauge
200, 250, 300mm**

Model:	S.SW06.010
Application:	For gaseous and liquid aggressive media, also in aggressive environments
Nominal size(mm):	200, 250, 300
Scale ranges:	0...600bar
Accuracy class:	1.0
Material of wetted parts:	Stainless steel

HIGHEST PRESSURE MEASURING



**Highest pressure measuring
Up to 2500bar**

Model:	S.SW06HP-S S.SA06HP-S (safety version)
Application:	For liquid media in high-pressure applications (e.g. water, hydraulic oil) Test benches (e.g. for hydraulic components) Water jet cutting High-pressure cleaning High-pressure generation
Nominal size(mm):	100, 160, 250
Scale ranges:	0...2500bar
Accuracy class:	1.6
Material of wetted parts:	Stainless steel



**Highest pressure measuring
Up to 8000bar**

Model:	S.SW06HP-P S.SA06HP-P (safety version)
Application:	For liquid media in high-pressure applications (e.g. water, hydraulic oil) Test benches (e.g. for hydraulic components) Water jet cutting High-pressure cleaning High-pressure generation
Nominal size(mm):	100, 160, 250
Scale ranges:	0...8000bar
Accuracy class:	1.6
Material of wetted parts:	Stainless steel

ULTRA-HIGH PURITY PRESSURE GAUGE



**Ultra-high purity
pressure gauge**

Model:	UPG50
Application:	Suitable for the high purity gas distribution system used in a semiconductor, electronic, medical, biotechnology and pharmaceutical industry
Nominal size(mm):	40, 50, 63
Scale ranges:	0 ... 4000psi
Accuracy class:	ASME 40.100-2013 GradeA
Cleanliness:	IEST-STD-CC1246 Level 100 R1 (Exceeds ASME B40. 100 Level IV)
Gas path surface finish:	< 10 Ra µin (Internal)
Material of wetted parts:	Stainless steel



**Ultra-high purity pressure
gauge with reed switch**

Model:	UPG50-RS
Application:	(Ultra) High purity gas delivery systems, Gas sticks, Process gas analyzers, Semiconductor, Cylinder Cabinet, Exhaust gas for CVD and etching equipment
Nominal size(mm):	50
Scale ranges:	-1 ... 0 to 0 ... 4000psi
Accuracy class:	2.5
Switch:	5% of span at Switch Point
Gas path surface finish:	Ra< 10 pin (0.25µm Internal) -EP(VCR)
Material of pressure connection:	SS316L VIM/VAR

CAPSULE PRESSURE GAUGE



Capsule pressure gauge
Steel case, copper alloy

Model:	S.CB05
Application:	For gaseous, dry and non-aggressive media
Nominal size(mm):	50, 63, 100
Scale ranges:	0 ... 60 to 0 ... 1000mbar
Accuracy class:	2.5
Material of wetted parts:	Copper alloy



Capsule pressure gauge
Stainless steel

Model:	S.CS02
Application:	For gaseous, dry and aggressive media, also in aggressive environments
Nominal size(mm):	63, 100, 160
Scale ranges:	0 ... 2.5 mbar to 0 ... 1000 mbar or 0 ... 1 inH2O to 0 ... 240 inH2O
Accuracy class:	1.6, 2.5
Material of wetted parts:	Stainless steel



Capsule pressure gauge
Stainless steel case, Copper alloy

Model:	S.CB06
Application:	For gaseous, dry and non-aggressive media
Nominal size(mm):	63, 100, 160
Scale ranges:	0 ... 10 to 0 ... 1000mbar
Accuracy class:	1.6, 2.5
Material of wetted parts:	Copper alloy



Capsule pressure gauge
Phonic case, safety version

Model:	CP150
Application:	For gaseous, dry and aggressive media, also in aggressive environments
Nominal size(mm):	150
Scale ranges:	0 ... 25 mbar to 0 ... 1000mbar
Accuracy class:	2.5
Material of wetted parts:	Copper alloy/stainless steel

TEXT GAUGE



Text gauge, Copper alloy

Model:	TG12
Application:	For gaseous and liquid media that are not highly viscous or crystallising and will not attack copper alloy parts
Nominal size(mm):	160, 250
Scale ranges:	0 ... 0.6 bar to 0 ... 600 bar
Accuracy :	0.25%, 0.4%, 0.6%
Material of wetted parts:	Copper alloy



Text gauge, Stainless steel

Model:	TG32
Application:	For gaseous and liquid aggressive media that are not highly viscous or crystallising, also in aggressive environments
Nominal size(mm):	160, 250
Scale ranges:	0 ... 0.6 bar to 0 ... 600 bar
Accuracy :	0.25%, 0.4%, 0.6%
Material of wetted parts:	Copper alloy

CONTACT PRESSURE GAUGE



Pressure gauge with
switch contacts
Copper alloy

Model:	EC01
Application:	For gaseous and liquid media that are not highly viscous or crystallising and will not attack copper alloy parts
Nominal size(mm):	100, 160
Scale ranges:	0 ... 0.6bar to 0 ... 600 bar
Accuracy class:	1.0
Material of wetted parts:	copper alloy



Contact pressure gauge
Stainless Steel

Model:	EC02.010(Bottom connection) EC02.050(Back connection)
Application:	For gaseous and liquid aggressive media that are not highly viscous or crystallising, also in aggressive environments
Nominal size(mm):	100, 160
Scale ranges:	0 ... 0.6bar to 0 ... 1600 bar
Accuracy class:	1.0
Material of wetted parts:	stainless steel

PRESSURE GAUGE
WITH OUTPUT SIGNAL



Pressure gauge with
output signal

Model:	EC03
Application:	Measurement and indication of process pressure Output signal 4 ... 20 mA Process industry
Nominal size(mm):	63, 100, 160
Scale ranges:	0 ... 0.6 bar to 0 ... 1,600 bar
Output signal:	4 ... 20 mA
Accuracy class:	1.6
Material of wetted parts:	Stainless steel

DIFFERENTIAL
PRESSURE GAUGE



Differential pressure gauge,
all-metal media chamber

Model:	DP73
Application:	For gaseous and liquid aggressive media that are not highly viscous or crystallising, also in aggressive environments
Nominal size(mm):	100, 160
Differential pressure measuring ranges:	From -1 ... +30 bar to 0 ... 40 bar
Material of wetted parts:	Stainless steel/Monel/ Hastelloy C276

Differential pressure gauge
With Magnetic Piston



Model:	DP80
Application:	For gaseous and liquid media that are not highly viscous or crystallising
Nominal size(mm):	80
Scale ranges:	0 ... 400 mbar to 0 ... 10 bar
Accuracy class:	3
Material of wetted parts:	Stainless steel

Differential pressure gauge,
all-metal media chamber



Model:	DP72
Application:	For gaseous and liquid aggressive media that are not highly viscous or crystallising, also in aggressive environments
Nominal size(mm):	100, 160
Scale ranges:	0 ... 16 mbar to 0 ... 40 bar
Accuracy class:	1.0, 1.6, 2.5
Material of wetted parts:	Stainless steel

DIAPHRAGM
PRESSURE GAUGE



Diaphragm Pressure Gauge

Model:	DP43
Application:	Process industry: Chemical industry, petrochemical industry, oil and gas, power generation, water and wastewater technology, machine building and general plant construction
Nominal size(mm):	100, 160
Scale ranges:	-1 ... 0 bar to 0 ... 25 bar
Accuracy :	1.6, 2.5
Material of wetted parts:	Stainless steel

Pressure gauge per EN 837-1
with mounted diaphragm seal
With threaded connection,
welded design



Model:	DSS551.34M
Application:	For aggressive, contaminated or hot media, used in process industry and water treatment.
Nominal size(mm):	100
Scale ranges:	0 ... 1 to 0 ... 60 bar
Accuracy class:	1.0
Material of wetted parts:	Stainless steel

DIAPHRAGM SEAL SYSTEM



Pressure gauge per EN 837-1
with mounted diaphragm seal
With milk threaded fitting

Model:	DSS555.18F
Application:	Hygienic pressure measurement in sanitary applications for the food and beverage industry
Nominal size(mm):	100
Scale ranges:	0 ... 1 to 0 ... 25 bar
Accuracy class:	1.0
Material of wetted parts:	Stainless steel

Pressure gauge per EN 837-1
with mounted diaphragm seal
With clamp connection



Model:	DSS530.22F
Application:	Hygienic pressure measurement in sanitary applications for the food and beverage industry
Nominal size(mm):	100
Scale ranges:	0 ... 0.6 to 0 ... 25 bar
Accuracy class:	1.0
Material of wetted parts:	Stainless steel

DIAPHRAGM SEAL SYSTEMS



Pressure gauge per EN 837-1 with mounted diaphragm seal With threaded connection, thread design

Model:	DSS550.10M
Application:	For aggressive, hot, corrosive, environmentally hazardous or toxic media, used in chemical, petrochemical industries and process industry.
Nominal size(mm):	100
Scale ranges:	0 ... 1 to 0 ... 60 bar
Accuracy class:	1.0
Material of wetted parts:	Stainless steel



Pressure gauge per EN 837-1 with mounted diaphragm seal With flange connection, flush diaphragm

Model:	DSS560.27M
Application:	For aggressive, highly viscous, crystallising or hot media, used in the chemical process and petrochemical industries.
Nominal size(mm):	100
Scale ranges:	0 ... 1 to 0 ... 60 bar
Accuracy class:	1.0
Material of wetted parts:	Stainless steel

DIGITAL PRESSURE GAUGE



Digital Pressure gauge	
Model:	CS601
Application:	For Oil and gas industry
Nominal size(mm):	92.6
Scale ranges:	-1-0 bar to 0-700 bar
Accuracy class:	up to 0.05%
Material of wetted parts:	Stainless steel



Precision digital pressure gauge	
Model:	CS108
Application:	For oil and gas industry , calibration service
Nominal size(mm):	95
Scale ranges:	-1-0 bar to 0-2500 bar
Accuracy class:	up to 0.025 % (incl. calibration certificate)
Material of wetted parts:	Stainless steel

DIGITAL PRESSURE GAUGE



Digital Pressure Gauge	
Model:	TPS.08 battery types
Application:	Measure non corrosive media such as gas, liquid, oil, etc.
Nominal size(mm):	40, 50, 65, 80,100
Scale ranges:	-1 ... 0 bar to 0 ... 6000 bar
Power supply:	Battery
Material of connection:	Stainless steel

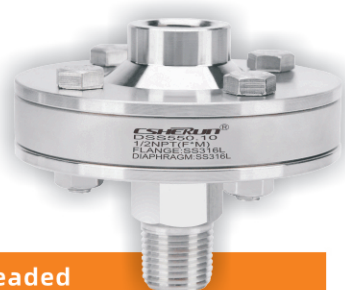


Digital Pressure Gauge	
Model:	TPS.08 wire connection types
Application:	Measure non corrosive media such as gas, liquid, oil, etc.
Nominal size(mm):	40, 50, 65, 80,100
Scale ranges:	-1 ... 0 bar to 0 ... 6000 bar
Accuracy:	0.05%, 0.1%, 0.2%, 0.5%
Power supply:	24V
Material of connection:	Stainless steel



Digital pressure gauge	
Model:	TPS.10
Application:	For a wide range of pressure measurement and calibration applications.
Nominal size(mm):	100
Scale ranges:	-1 ... 0 bar to 0 ... 6000 bar
Accuracy class:	0.05%, 0.1%, 0.2%
Power supply:	Battery
Output:	RS485 OR RS232
Communication:	Blue communication Communication with CSHERUN's Link Mobile App
Material of connection:	Stainless steel

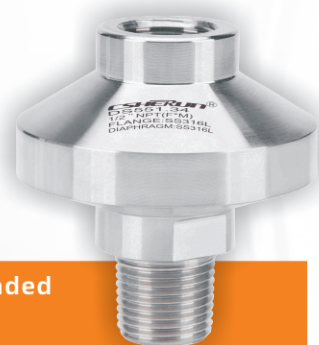
DIAPHRAGM SEAL WITH THREADED CONNECTION



Diaphragm seals with threaded
connection
Thread design

Model: DS550.10

Application: For aggressive, hot, corrosive,
environmentally hazardous or
toxic media



Diaphragm seals with threaded
connection
Welded design

Model: DS551.34

Application: For aggressive, hot, corrosive,
environmentally hazardous or
toxic media



Diaphragm seals with threaded
connection Flush diaphragm
or with protective plate

Model: DS551.36

Application: For highly viscous or crystallising
media, For hard and abrasive
media, Hygienic application



Diaphragm seals with threaded
connection Internal diaphragm,
welded design

Model: DS551.38

Application: Process industry, Suitable for
corrosive, contaminated or
heterogeneous pressure media



Diaphragm seals with threaded
connection
Plastic version

Model: DS551.31

Application: For aggressive, corrosive or
environmentally hazardous
media



Diaphragm seals with flange
connection
With internal diaphragm

Model: DS560.26

Application: For aggressive, high viscous,
crystallising or hot media

DIAPHRAGM SEAL WITH FLANGE CONNETION



Diaphragm seals with flange
connection
With flush diaphragm

Model: DS560.27

Application: Aggressive, highly viscous,
crystallising or hot media

DIAPHRAGM SEAL WITH STERILE CONNECTION



Diaphragm seal with sterile connection
With union nut (milk thread fitting)

Model: DS555.18, DS555.19,
DS555.20, DS555.21

Application: Food and beverage production,
For dairies, dairy products,
Breweries, Filling systems,
Filtration, separation,
pasteurisation



Diaphragm seal with sterile connection
Aseptic connection per DIN 11864

Model: DS530.51

Application: Sanitary applications, Food and beverage production, Pharmaceutical industry, biotechnology industry, production of active ingredients. Production of aseptic basic materials in the chemical industry



Diaphragm seal with sterile connection
With clamp connection (TRI - CLAMP)

Model: DS530.22, DS530.52, DS530.53

Application: Sanitary applications, Gases, compressed air, vapour; liquid, pasty, powdery and crystallising media, Ultra-pure steam systems, Mounting to pipelines and vessels, Pressure/vacuum monitoring, e.g. vacuum conveyors, pump monitoring

FLUSHING RING
FOR FLANGE-CONNECTION
DIAPHRAGM SEALS



Flushing ring
For flange-connection
diaphragm seals

Model: DS510.27

Application: For flange-connection diaphragm seals with flush diaphragm or cell-type design



Pressure sensors

Model: TPS.03

Measuring principle: Thin-film-on-steel

Application: Machine building, Measurement and control technology, Hydraulics and pneumatics, Pumps and compressors

Measuring ranges: 0 ... 250Mpa

Accuracy: ± 0.1%FS, ± 0.25%FS, ± 0.5%FS

Rise time: ≤1ms

Long term stability: ≤ 0.1% FS/year

Durability: 107 times

Medium tempreature: -40°C ... +125°C

Output signal: 4 ... 20mA, 0 ... 10VDC, 0 ... 5VDC, 0.5 ... 4.5VDC, 1 ... 6VDC, CAN open

Pressure connection: G1/4, G1/2, NPT1/4, NPT1/2

Electrical connection: Delphi Packard Metri Pack(3 pin), Hirschmann EN 175301-803-A(DIN 43650-A), Hirschmann EN 175301-803-C(DIN 43650-C), Deutsch DT04 (3 pin), Deutsch DT04 (4 pin), Deutsch DTM04 (3 pin), M12X1 (4 pin) Plastic, M12X1 (4 pin) Metal, AMP Superseal (3 pin), Shielded cable with PVC jacket and 24 AWG leads

PRESSURE TRANSMITTER



Industrial Pressure Transmitter

Model:	TPS.04
Measuring principle:	Diffused silicon
Application:	Machine building, Measurement and control technology, Hydraulics and pneumatics, Pumps and compressors
Measuring ranges:	- 100kPa ... 700Mpa
Accuracy:	± 0.1%FS, ± 0.25%FS, ± 0.5%FS
Rise time:	≤3ms
Long term stability:	≤ 0.3% FS/year
Durability:	10 ⁷ times
Medium tempreature:	-40°C ... +125°C
Output signal:	4 ... 20mA, 0 ... 10VDC, 0 ... 5VDC, 0.5 ... 4.5VDC, 1 ... 6VDC
Pressure connection:	G1/4A male



Pressure/ Absolute Pressure Transmitter

Model:	TPS.09.PT
Measuring ranges:	Pressure 6kPa ... 40MPa Absolute Pressure 20kPa ... 10MPa
Output:	4 - 20mA + HART, RS485
Accuracy:	± 0.05%FS, ± 0.075%FS, ± 0.1%FS
Process connection:	M20*1.5(M), G1/2(M), G1/4(M), NPT1/2(M)
Medium:	Liquid, Air or Steam

PRESSURE TRANSMITTER



4G Wireless with Solar Pressure Transmitter

Model:	TPS.09.WPS
Measuring ranges:	0kPa to 20kPa ... 40MPa
Accuracy:	± 0.025%FS, ± 0.1%FS, ± 0.5%FS
Configuration Method:	Local Bluetooth/Remote Platform
Communication method:	4G/L0RaWAN/Zigbee A11
Communication protocol:	MQTT
SIM Card:	Nano SIM (12mm * 9mm)
Data Transmission:	4G



Differential Pressure Transmitter

Model:	TPS.09.DP
Measuring rangs:	1kPa ... 3MPa
Output:	4 - 20MA + HART, RS485
Accuracy:	± 0.05%FS, ± 0.075%FS, ± 0.1%FS
Process connection:	M20*1.5(M), NPT1/4(F), UNF7/16(F)
Medium:	Liquid, Air or Steam



Remoter Seals Differential Pressure Transmitter

Model:	TPS.09.DF
Measuring ranges:	6kPa ... 3MPa
Output:	4 - 20MA + HART, RS485
Accuracy:	± 0.1%FS, ± 0.25%FS, ± 0.5%FS
Process connection:	DN50, DN80
Medium:	Liquid, Air or Steam

ELECTRONIC PRESSURE SWITCH
WITH DISPLAY



Electronic pressure switch with display

Model:	TPS.01SW
Application:	Machine tools, Hydraulics and pneumatics, Food and pharmaceutical industry
Measuring ranges:	-1 ... 0 to 0 ... 1000bar
Display:	4 digit LED
Switching function:	Hysteresis
Analogue output:	4 - 20mA
Supply voltage:	DC 15 ... 35V
Process connection:	G1/4A, Optional connection

ELECTRONIC TEMPERATURE SWITCH
WITH DISPLAY



Electronic temperature switch with display

Model:	TTR.02
Application:	Machine tools, Hydraulic power packs, cooling and lubrication systems, machine building
Measuring ranges:	-20 ... + 150°C
Display:	4 digit LED
Analogue output:	4 - 20mA
Supply voltage:	DC 15 ... 35V
Material of wetted parts:	Stainless steel
Electrical connection:	Circular connector M12 * 1

LEVEL FLOAT SWITCH



Level float switch for industrial applications

Model:	TLT.02
Application:	Level measurement of liquids in machine building, Control and monitoring tasks for hydraulic power packs, compressors and cooling systems
Measuring principle:	Potential-free switching reed contacts are triggered by a magnet in the float.
Accuracy:	±3 mm switch point
Guide tube length:	60 ... 1,500 mm
Material of wetted parts:	Stainless steel



Level float switch with temperature output

Model:	TLT.01
Application:	Combined level and temperature measurement of liquids in machine building, Control and monitoring tasks for hydraulic power packs, compressors and cooling systems
Measuring principle Level:	Potential-free switching reed contacts are triggered by a magnet in the float.
Temperature:	Bimetal temperature switch
Accuracy:	±3 mm switch point
Bimetal switch:	±5 °C switch point
Guide tube length:	60 ... 1,500 mm
Material of wetted parts:	Stainless steel

BIMETAL THERMOMETER

Industrial version
Stainless steel case

Model:	TB01(Bottom connection)
	TB02(Back connection)
	TB03(Any angle connection)

Nominal size(mm): 63, 80, 100, 160

Permissible operating pressure at the stem(bar): 25

Material of wetted parts: Stainless steel

Exhaust temperature gauge
Aluminum case

Model:	TA06.010
	TA06.030(Liquid filling)
Nominal size(mm):	100
Range:	-60°C to 650°C
Material of wetted parts:	Stainless steel

DIGITAL THERMOMETER

Solar digital thermometer
Stainless steel case

Model:	DA7501 (Any angle connection)
Nominal size(mm):	83
Permissible operating pressure at the stem(bar):	25

Material of wetted parts: Stainless steel

Solar digital thermometer
Stainless steel case

Model:	DS1001(Back connection)
Nominal size(mm):	50 with flange
Length of capillary:	1m

Pressure type thermometer
Stainless steel case

Model:	TA05.050
	TA05.070(Liquid filling)
Nominal size(mm):	100, 160
Range:	-60°C to 650°C
Length of capillary:	0 ...20m
Material of wetted parts:	Stainless steel

FLOW METER

Gas Turbine Flow Meter

Model:	WG
Application:	Precision measuring instruments which for gas.
Nominal Diameter (mm):	DN25~DN400
Nominal Pressure:	0.5-4.0 Mpa
Accuracy class:	1.5
Shell Material:	Aluminum alloy / Carbon Steel / Stainless Steel
Output:	4~20mA

Vortex flow meter

Model:	LD Electromagnetic Flowmeter
Application:	Used in petrol, chemical industry, light industry and power heat supply.
Nominal Diameter (mm):	DN15~DN300
Nominal Pressure:	1.6 MPa, 2.5 MPa, 4.0 MPa
Accuracy class:	1.0
Body Material:	Stainless Steel
Output:	4~20mA

SF6 GAS SOLUTIONS

SF6 Gas density indicator

Model:	SF100
Application:	For SF6 gas density monitoring
Nominal size(mm):	63,100
Accuracy class:	1.0/2.5
Pressure ranges:	1.6 ... 25 bar

SF6 Gas density monitor

Model:	SFM10
Application:	For SF6 gas density monitoring
Nominal size(mm):	100
Accuracy class:	1.0/2.5
Pressure ranges:	1.6 ... 25 bar
Material of wetted parts:	Stainless steel

CALIBRATION



Precision digital pressure gauge for calibration

Model:	CS602
Application:	Intelligent Pressure Calibrator
Nominal size(mm):	95
Scale ranges:	-1-0 bar to 0-2500 bar
Accuracy class:	up to 0.025 %
Material of wetted parts:	Stainless steel



Electric Calibrator

Model:	CS318L
Application:	For gas calibration
Nominal size(mm):	730L×320W×250H
Pressure ranges:	0~600 bar



Data Logger

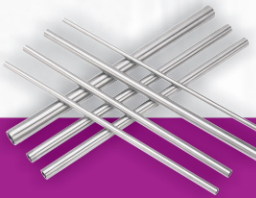
Model:	TPS.10A
Application:	For a wide range of pressure measurement and calibration applications.
Nominal size(mm):	100
Scale ranges:	-1 ... 0 bar to 0 ... 6000 bar
Accuracy class:	0.05%, 0.1%, 0.2%
Power supply:	Battery
Output:	RS485 OR RS232
Data logger:	1,000,000 data Blue communication Communication with CSHERUN's Link Mobile App
Material of connection:	Stainless steel

Overpressure protector, adjustable



Model:	OH13
Application:	For aggressive media, also in aggressive environments, protection against overpressures up to 100MPa.
Material:	Stainless steel

Cold drawn stainless steel tube



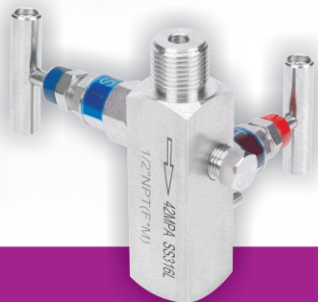
Model:	Seamless tube or welded tube
Out diameter:	2-61mm
Wall thickness:	0.3-10mm

PRESSURE GAUGE COCK



Stopcock for pressure measuring instruments

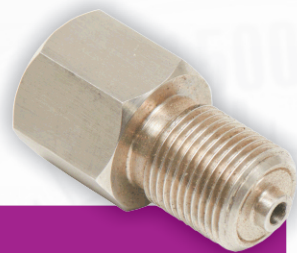
Model:	STC11
Nominal pressure :	≤ 25
Application:	for measurement of liquids, gases and vapours



Block-and-bleed valve 2-valve manifold

Models:	NV20
Application:	For gaseous and liquid aggressive media that are not highly viscous or crystallising, also in aggressive environments
Material of wetted parts:	Stainless steel/Monel

HIGH-PRESSURE ADAPTER



High-pressure connection adapters

Nominal pressure : 15,000 ... 60,000 psi

Model: Hp10

Valve manifold for differential pressure measuring instruments 3 - , 5 - valve manifold



Model : NV3, NV5

Applications: Shut-off, pressure equalising
and vent valves for differential
pressure measuring instruments

Operation conditions: ≤ 690 bar

Material of wetted parts: Stainless steel

SYPHONS AND CONNETION PIPES



Syphons and connecting pipes For pressure measuring instruments

Model: STC15

Nominal pressure : 420bar

Application: Cooling element for protection
from excessive heating of
liquids, gases and vapours

Cooling element for pressure measuring instruments For threaded attachment



Model : DS510.32

Applications: For screwing onto pressure
measuring instruments at
increased medium temperatures

Temperature: For medium temperatures up
to 200 °C

Pressures: up to 600 bar

Material: Stainless steel

PRESSURE GUAGE MOVEMENT

EN837-1

Fully automated assembly system manufacture

Used to DN20-300mm pressure gauge

Many different types of transmission ratio

625 different types movement can be choice

